



HARDI Australia
534-538 Cross Keys Rd
Cavan SA 5094
Ph: (08) 8343 9999

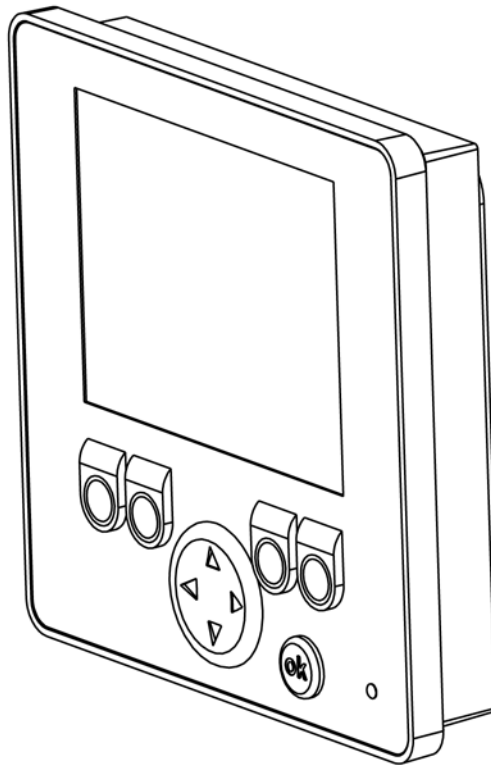
HC451 - Remote tank gauge installation instruction

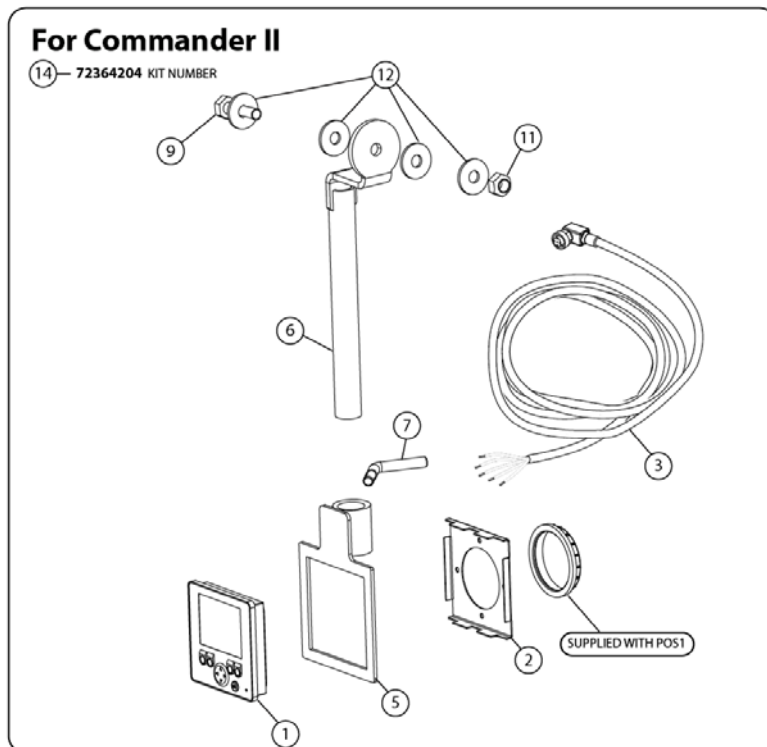
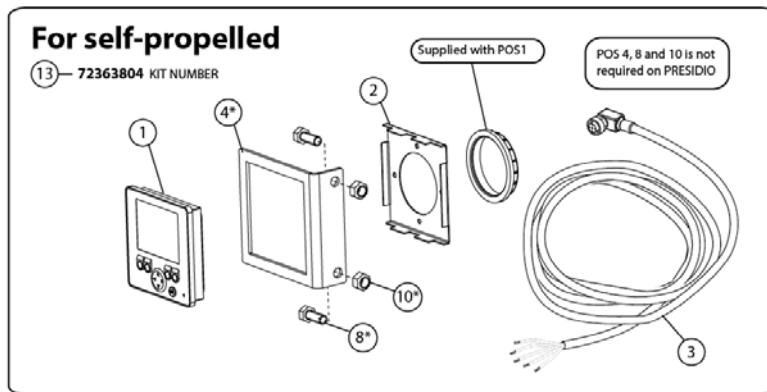
Instruction

65005204

GB -02.2016

Rev.1





Note! List below shows part for both trailer and self-propelled. You will only get parts for either trailer or self-propelled.

Pos:	Part list:	
1	26045404	DISPLAY, 2.8" HMI WITH TG SW (x1)
2	26033803	DISPLAY FITTING PANEL, IFM (x1)
3	26033903	CABLE, M12, 120 OHM, SM, IFM (x1)
4	16328904	PLATE 3 X 120 X 100 (x1)
5	61047004	REMOTE TANK GAUGE BKT COM (x1)
6	61075800	ROR F. HC6200, CM'11 (x1)
7	142516	M10 LOCKING BOLT (x1)
8	420582	SCREW M8X20 G304 (x2)
9	421105	SCREW M10X45 G304 (x1)
10	460143	NUT M8 NYLOC (x2)
11	460423	NUT M10 NYLOC (x1)
12	471140	WASHER D30/10.5X2.5 (x4)
-	5914998-6	SHORT CABLE TIES (x10)

Requirements:

The HC 451 can only be installed on sprayers equipped 6500, 8500/9500 or with ISO.

Note! HC 451 Remote tank gauge will not work on a HC5500 controller.

Recommended Tools:

17mm spanner (x2)

13mm spanner (x2)

9mm drill bit and drill

Procedure:

1. Location for the tank remote display.

For Trailer

On trailer the display should be mounted inside the left safety locker, brackets supplied fits into brackets mounted inside the locker.

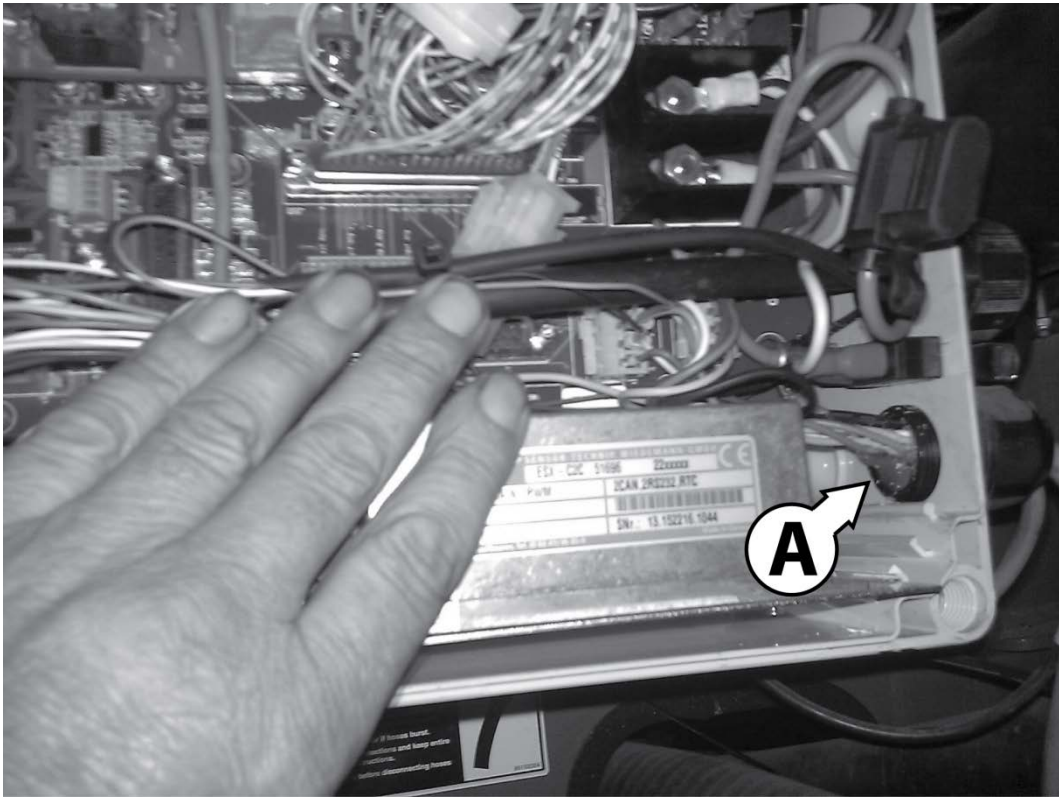
For Self-propelled

For self-propelled sprayers the display should be mounted so you could read it from the tank filling work zone. Put it in a spot where it's protected as possible. Drill 2 9mm holes and bolt it into place.



(Picture shows display mounted on Saritor)

2. Feed display cable through bottom grommet (**A**) in the Jobcom box as shown on picture below. Connect the other end to the back of the display. Use included cable ties to secure the cable.

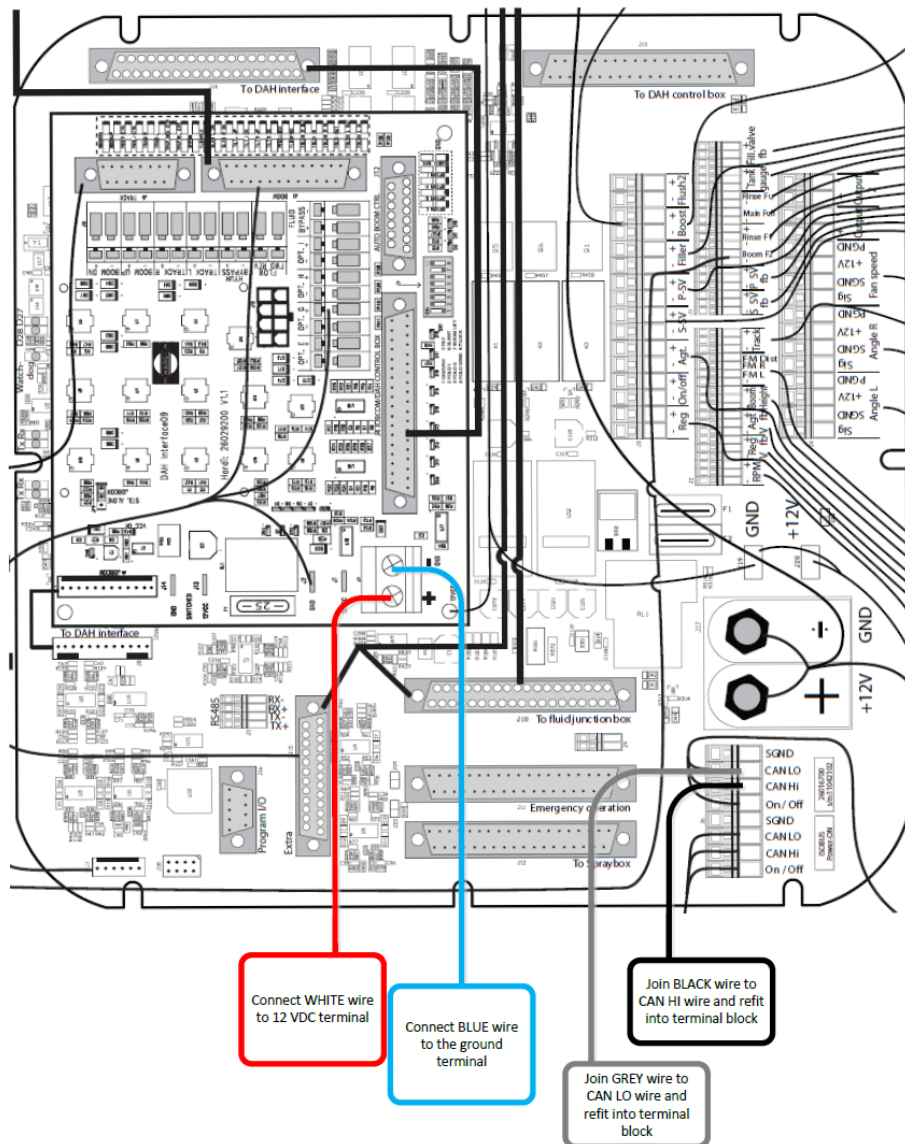


3. Wiring diagram



Caution! Turn off power before connecting the cable in Jobcom. Failure to do so may damage the electric components in the Jobcom.

Connect cables as shown below. The Tank Display will turn on when job com is turned on, no setup or programming required.



Cable pin out from Tank Display

5-pin cable connection (cable has built in terminator)

Pin 1 Brown - Not used

Pin 2 White - 12VDC

Pin 3 Blue - Ground (Earth)

Pin 4 Black - Can H

Pin 5 Grey - Can L